



Valve Actuators

MAXIMATOR air operated valve actuators are piston type design, and are mounted on a standard manual valve to provide remote control capability. There are two air to open actuators available, and selection is based on the valve size, system pressure, and air pressure available.

Valve Actuator features:

- ▶ Piston style valve actuator design offers dependable operation and longer actuator cycle life.
- ▶ Actuators can be added to standard manual valve bodies to provide remote control capabilities in process applications.
- ▶ Two different size actuators are available to cover varying plant air supplies.
- ▶ Actuators are made of anodized aluminum, which provides good corrosion resistance.
- ▶ Actuators are available in normally open or normally closed configuration.

MAXPRO offers a complete line of high pressure valves, fittings and tubing to compliment the valve actuator line.

Note: When selecting multiple items, the pressure rating would be that of the lowest rated component.

Valve Actuator Index

Air to Open / Normally Closed	2
Air to Close / Normally Open	3

Maxpro Technologies, Inc.
 7728 Klier Drive South · Fairview Pennsylvania 16415
 Phone: 814-474-9191 · Fax: 814-474-9391
 website: www.maxprotech.com

All general terms and conditions of sale, including limitations of our liability, apply to all products and services sold.
 MG 1S 3M R0 0407



Air Valve Actuators

Air to Open, Normally Closed

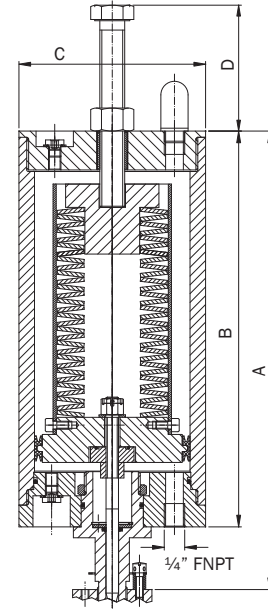
Order Information

Select the basic manual valve from the appropriate pressure section, then add the actuator suffix number to the end of the manual valve catalog number.

Example: 21V4M071-**MNC**, medium duty actuator, normally closed. This valve can be operated at 21,000 psi with an air supply of 118 psi to the valve actuator.

Technical Information

Maximum allowable working pressure for actuator 145 psi
 Maximum operation temperature range for actuator -22°F to +176°F
 Actuator material Anodized Aluminum
 Air connection size: 1/4" FNPT



Actuator Type	Ordering Suffix	Piston Area	A	B	C	D*
Medium Duty	-MNC	12.16 in. ²	11.60"	10.00"	5.91"	2.50"
Heavy Duty	-HNC	31.15 in. ²	13.30"	10.70"	7.10"	2.75"

* D dimension is an approximation only.

Valve Series	Air Actuator			Air Pressure Regulated to Open Valve At: System Pressure (ksi)								Max. Pressure (psi)	Flow Value Cv*
	Type	Ordering Suffix	Data	0-7	10	12	14	16	18	20	21		
21V4 and 21V6	Medium Duty	-MNC	Air Pressure (psi)	98	102	104	107	110	112	116	118	21,000	0.37 - 1/4"
			Spring Pre-compression (in.)	1.00	1.12	1.28	1.38	1.49	1.58	1.71	1.77		
			Stem Travel (in.)	0.33									
	Heavy Duty	-HNC	Air Pressure (psi)	86	92	94	96	98	100	102	103	21,000	
			Spring Pre-compression (in.)	0.68	0.78	0.81	0.87	0.91	0.94	1.00	1.03		
			Stem Travel (in.)	0.33									
21V9	Heavy Duty	-HNC	Air Pressure (psi)	116	130	138	145					14,500	1.75
			Spring Pre-compression (in.)	0.47	0.94	1.44	2.00						
			Stem Travel (in.)	0.50									
				0-7	10	15	20	25	30	35	36		
36V	Medium Duty	-MNC	Air Pressure (psi)	93	96	103	108	113	116			29,000	0.12 - 1/4"
			Spring Pre-compression (in.)	0.94	1.03	1.28	1.44	1.58	1.73				
			Stem Travel (in.)	0.15									
	Heavy Duty	-HNC	Air Pressure (psi)	74	76	81	86	91	96	101	102	36,000	
			Spring Pre-compression (in.)	0.75	0.81	0.88	0.94	1.03	1.12	1.19	1.25		
			Stem Travel (in.)	0.15									
				0-7	10	20	30	40	50	60	65		
65V	Medium Duty	-MNC	Air Pressure (psi)	81	84	97	100	110	118			50,000	0.08 - 1/4"
			Spring Pre-compression (in.)	0.75	0.84	1.06	1.25	1.44	1.63				
			Stem Travel (in.)	0.37									
	Heavy Duty	-HNC	Air Pressure (psi)	65	70	75	80	85	90	95	97	65,000	
			Spring Pre-compression (in.)	0.53	0.56	0.63	0.81	0.94	0.97	1.00	1.03		
			Stem Travel (in.)	0.37									
				0-7	15	30	45	60	75	90	101		
101V	Medium Duty	-MNC	Air Pressure (psi)	84	90	102	114	126				60,000	0.08
			Spring Pre-compression (in.)	0.88	0.94	1.31	1.55	1.88					
			Stem Travel (in.)	0.28									
	Heavy Duty	-HNC	Air Pressure (psi)	60	66	76	86	96	106	116	122	101,000	
			Spring Pre-compression (in.)	0.56	0.63	0.78	0.88	1.03	1.15	1.28	1.38		
			Stem Travel (in.)	0.28									

* Cv value is for straight pattern vee stem valves. Increase this value by 50% for angle pattern valves.
 Cv Values vary due to compression of actuator spring, adjusted based on system pressure.
 Values shown are for maximum stem travel.

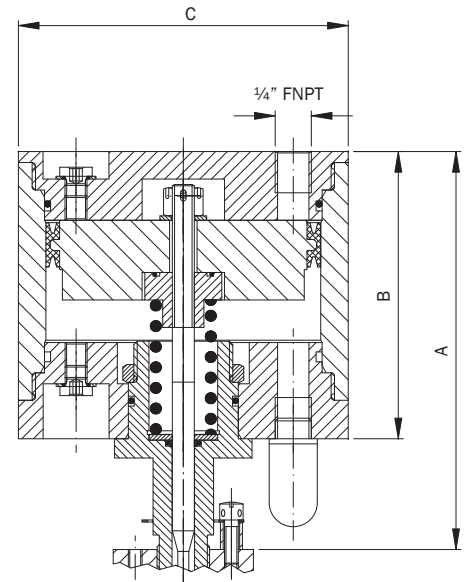
Order Information

Select the basic manual valve from the appropriate pressure section, then add the actuator suffix number to the end of the manual valve catalog number.

Example: 21V4M071-**MNO**, medium duty actuator, normally open. This valve can be operated at 21,000 psi with an air supply of 106 psi to the valve actuator.

Technical Information

Maximum allowable working pressure for actuator 145 psi
 Maximum operation temperature range for actuator -22 °F to +176 °F
 Actuator material Anodized Aluminum
 Air connection size: ¼" FNPT



Actuator Type	Ordering Suffix	Piston Area	A	B	C
Medium Duty	-MNO	12.16 in. ²	5.70"	4.10"	5.91"
Heavy Duty	-HNO	31.15 in. ²	5.70"	4.10"	7.10"

Valve Series	Air Actuator		Air Pressure Regulated to Close Valve At: System Pressure (ksi)								Max. Pressure	Stem Travel (in.)	Flow Value Cv*
	Type	Ordering Suffix	0-7	10	12	14	16	18	20	21			
21V4 and 21V6	Medium Duty	-MNO	72	79	83	88	93	98	103	106	21,000	0.33	0.31 - ¼" 0.75 - ⅜"
	Heavy Duty	-HNO	52	56	59	62	65	68	71	75			
21V9	Heavy Duty	-HNO	88	100	108	116	124	132	140	146	21,000	0.50	1.75
			0-7	10	15	20	25	30	35	36			
36V	Medium Duty	-MNO	65	69	76	83	90	99	106	108	36,000	0.15	0.12 - ¼" 0.23 - ⅜" 0.33 - 9/16"
	Heavy Duty	-HNO	44	50	56	63	70	77	84	86			
			0-7	10	20	30	40	50	60	65			
65V	Medium Duty	-MNO	55	57	66	76	85	93	102	107	65,000	0.37	0.08 - ¼" 0.09 - ⅜" 0.14 - 9/16"
	Heavy Duty	-HNO	30	32	42	52	62	72	82	86			
			0-7	15	30	45	60	75	90	101			
101V	Medium Duty	-MNO	61	73	89	96	108	119	131	140	101,000	0.28	0.08
	Heavy Duty	-HNO	40	45	55	65	75	85	95	102			

* Cv value is for straight pattern vee stem valves. Increase this value by 50% for angle pattern valves.